

4. MAPS AND FIGURES

Figure 1. Tuberculosis notification rates per 100 000 population, 2002



Figure 2. Proportion of tuberculosis cases of foreign origin, 2002

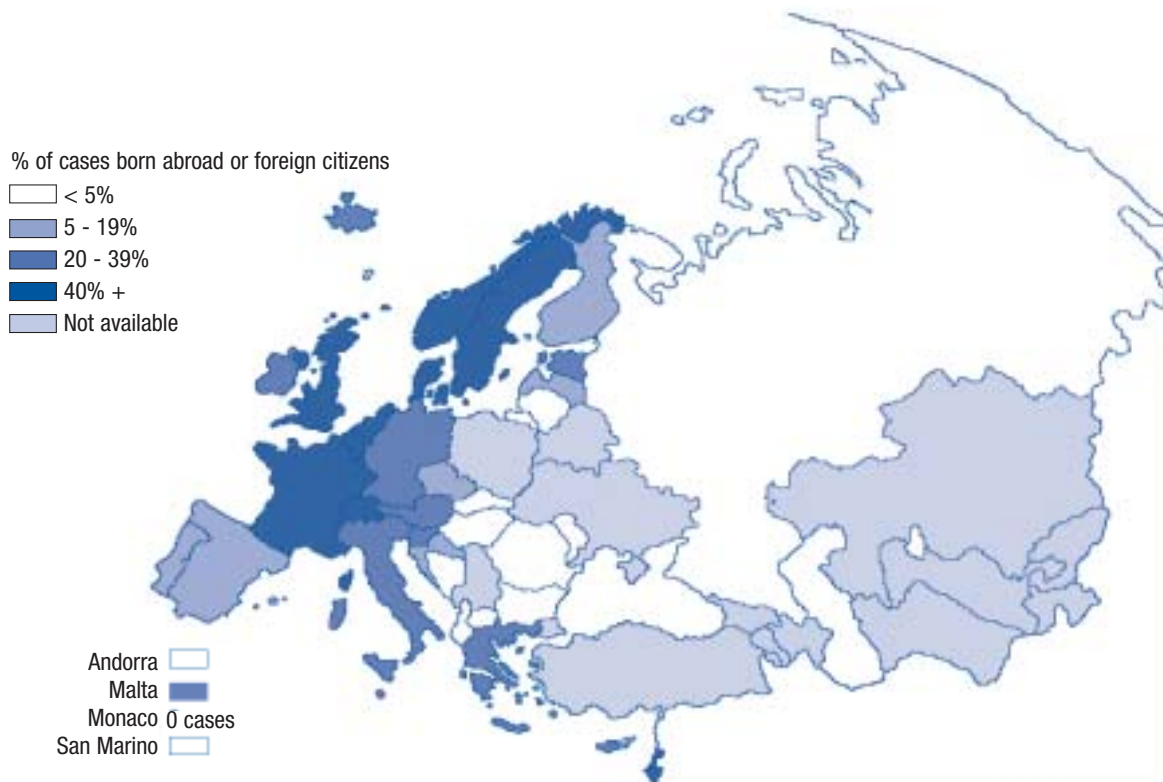
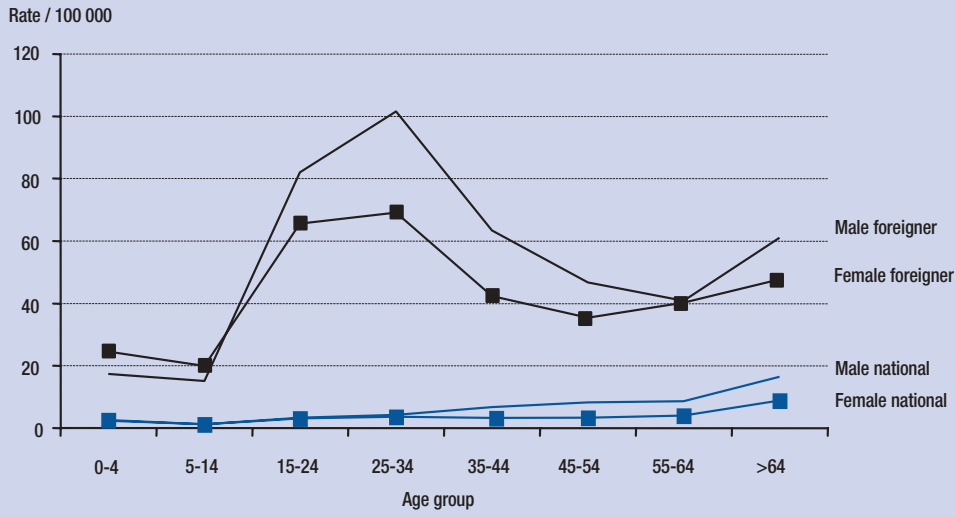


Figure 3. TB notification rates by age group, sex and geographic origin, EU & West*, 2002



* Countries providing population estimates by geographic origin: Austria, Belgium, Denmark, Finland, France, Germany, Iceland, Netherlands, Norway, Slovenia, Sweden, Switzerland, United Kingdom

Figure 4. Tuberculosis notification rates by geographic area, 1995-2002

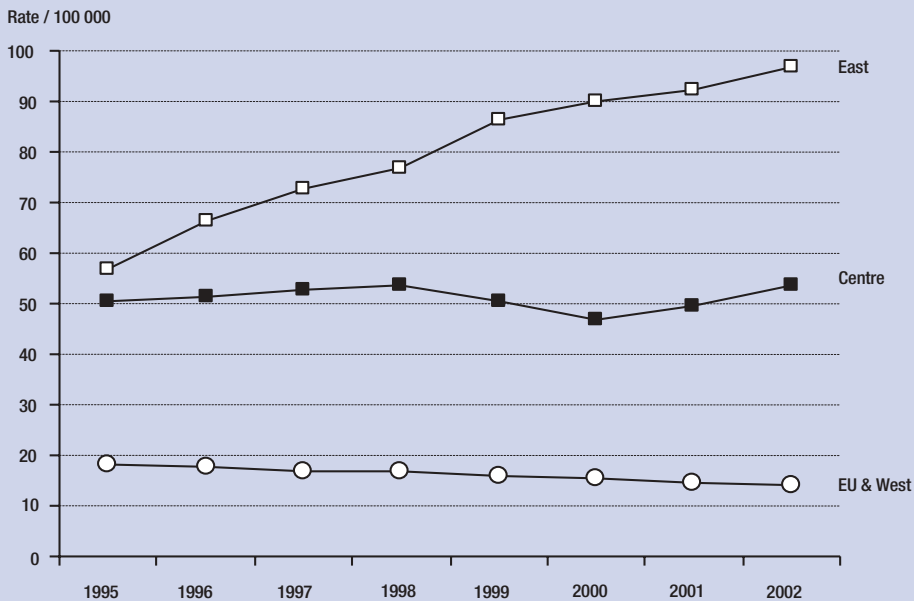
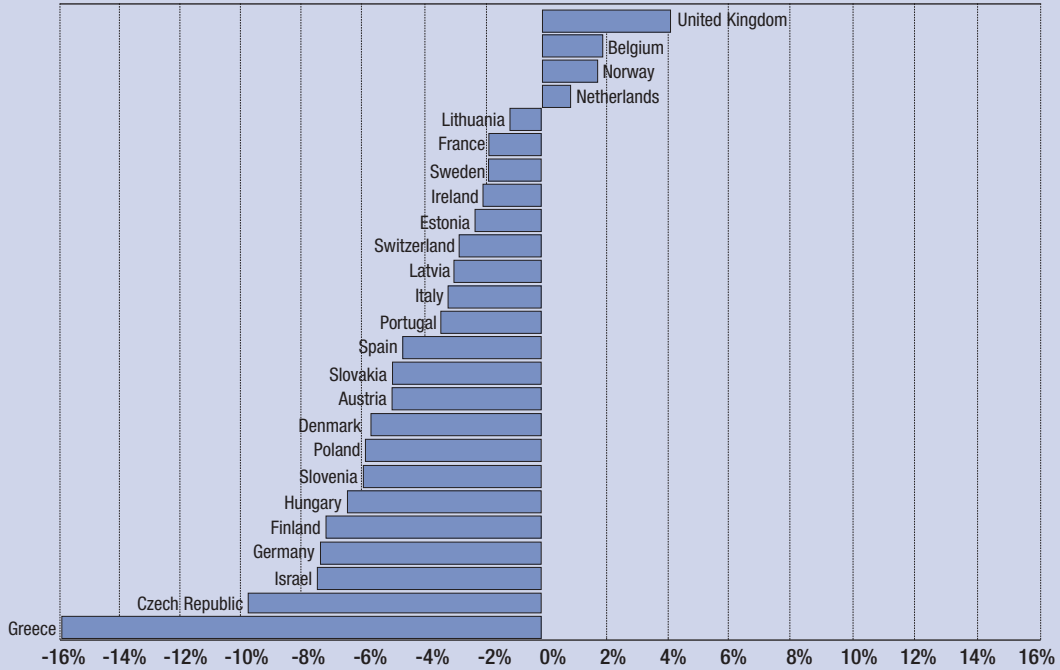
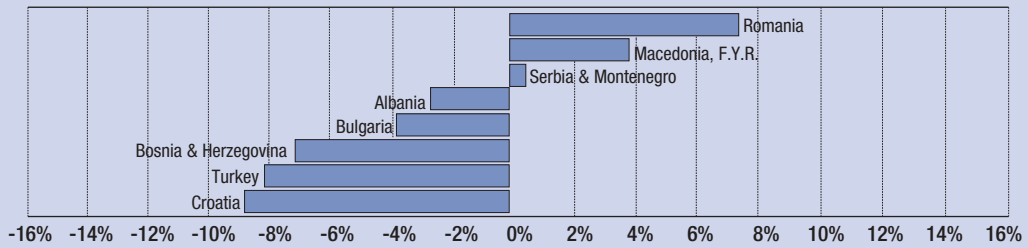


Figure 5. Mean annual percentage change in TB notification rates, WHO European Region, 1998-2002

EU & West



Centre



East

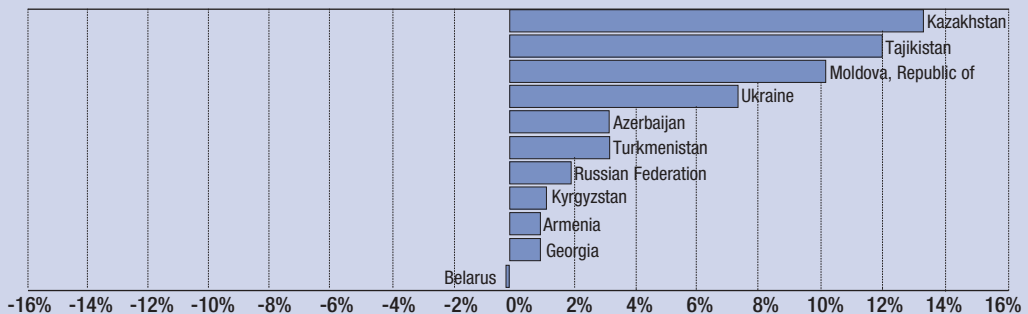


Figure 6. TB notification rates by age group and sex, WHO European Region, 2002

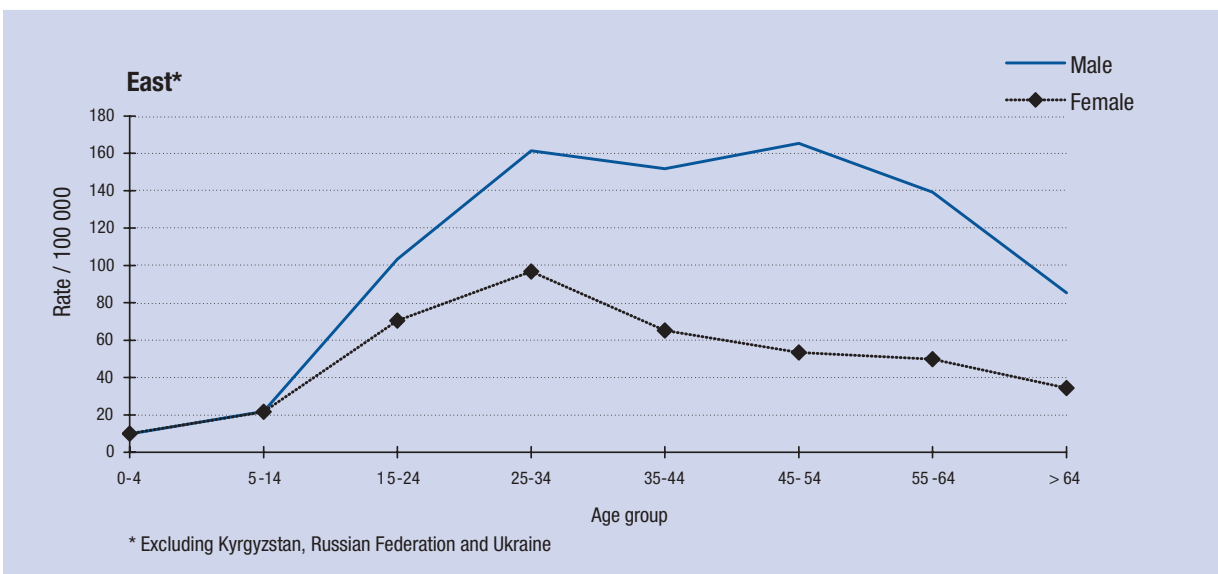
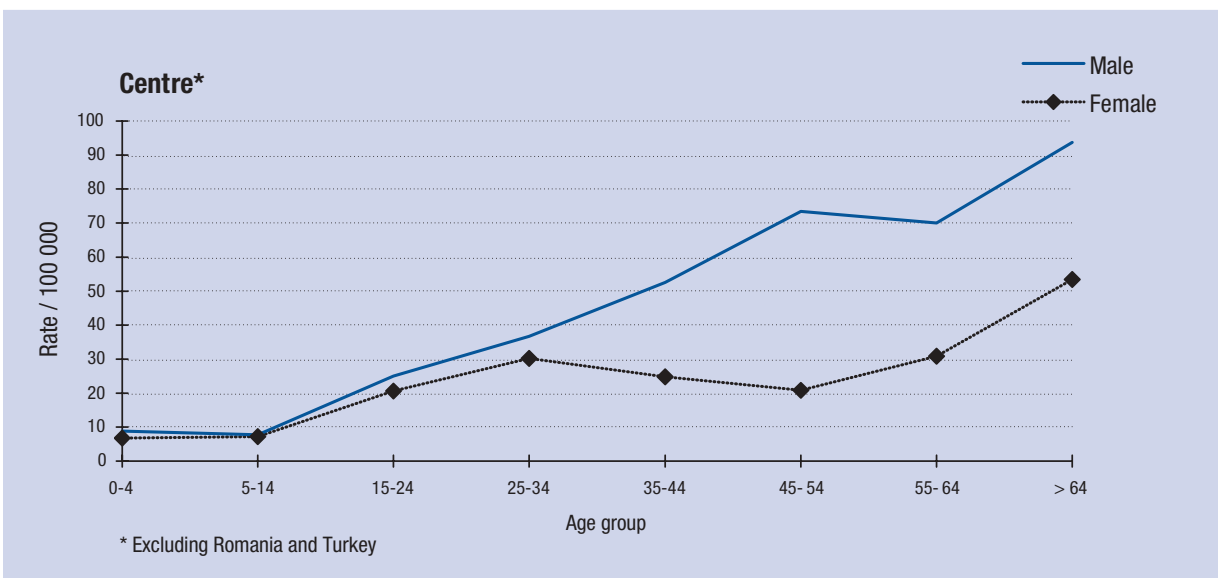
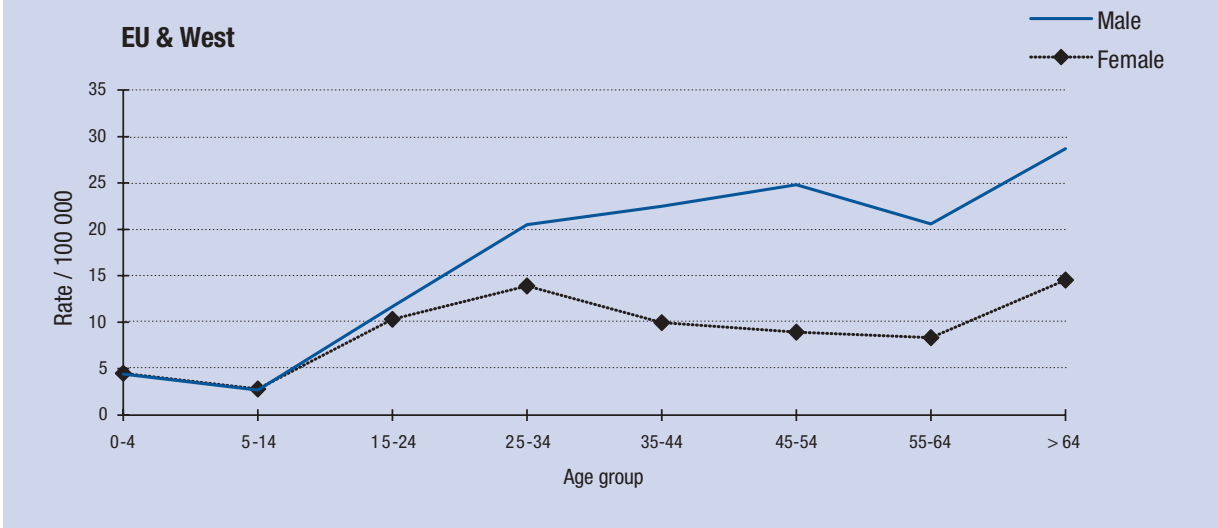


Figure 7. Tuberculosis cases by geographic origin, EU & West*, 1996-2002

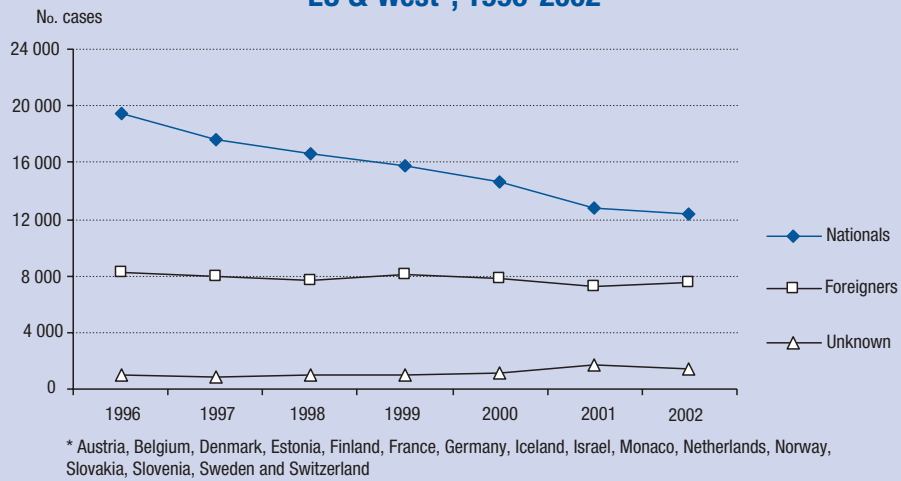


Figure 8. Primary resistance to isoniazid and primary multidrug resistance, WHO European Region, 2002

